



The Sydney  
children's  
Hospitals Network



WESTERN SYDNEY  
UNIVERSITY

# Graduate Diploma in Child Health

W  
S  
U

# Contents

Sydney Children's Hospitals Network and Western Sydney University	3
Overview	4
Who is this course for?	5
Learning outcomes	6
Assessments	8
Learning environment	10
Subjects	12
How to apply	



## Sydney Children's Hospitals Network

The Sydney Children's Hospitals Network is the largest network of hospital and healthcare services for children in Australia. We've been bringing paediatric education to healthcare professionals globally since 1992.

The Sydney Children's Hospitals Network is deeply committed to ensuring children and young people have access to the best healthcare possible by empowering our health professionals with accessible and affordable paediatric education. This vision is further supported by Western Sydney University's commitment to addressing global health challenges, resulting in the joint delivery of an affordable postgraduate qualification for all healthcare professionals - the Graduate Diploma in Child Health.

While located within the Westmead Health Precinct, our courses reach doctors, nurses and healthcare professionals living and practicing around the world. Behind our programs are a small team of educational designers, paediatricians and specialists dedicated to providing evidence-based, best practice teaching in the discipline of paediatrics.



## Western Sydney University

Western Sydney University is at the centre of addressing the health challenges that currently exist within our region. With our community, government and industry partners, we are transforming the way we engage with the health and wellbeing of Western Sydney. Through our collaborative commitment to community health and wellbeing, our focus on quality teaching and vital research, Western Sydney University is driving improved health outcomes for our region.

Western Sydney University is embedded in every major health and education precinct across Western Sydney. Across our medical, nursing, psychology, health sciences, allied health and health management fields we have over 12,500 students in clinical or related placements in every major hospital throughout the region.

Western Sydney University is ranked the number one uni in the world, for commitments to the UN's Sustainable Development Goals (Times Higher Education Impact Rankings, 2022).



# Overview

## Graduate Diploma of Child Health (GDCH)

Course	WSU Code	Intake	Location	Duration
GDCH	4793	January / April June / September	Online	1 year full time, or 2 years part-time

This program is jointly delivered by The Sydney Children's Hospitals Network (SCHN) and Western Sydney University (WSU).

This course is designed for health professionals working in a variety of clinical professions, from general practice, to nursing and allied health. It provides students with a broad range of paediatric sub-specialties relating to evidence-based care and practice, as well as detection and diagnosis of common childhood presentations.

Students will learn to evaluate how social determinants can impact the care for children and make great impact in their role in advocating for the children in their care.

Course material will cover treatment and prevention strategies focused on delivering safe and effective child-centred health care. Completing this program will provide students with a stronger foundation in paediatrics to support their daily practice in local region(s).

### Who is this course for?

This course is suitable for health professionals who wish to pursue a career in paediatrics, specialise in an area or simply refresh their knowledge in paediatrics, including:

- General practitioners
- Trainees
- Hospital doctors
- Medical students
- Health professionals
- Nurses

Not sure if this course is for you? Email [service@schp.org.au](mailto:service@schp.org.au) or call 02 9933 8600 to speak to us about your options.

### Fee information

The course fee for 2024 is AU\$6,000. FEE-help is available for eligible applicants.

### Course requirements

To be eligible for this study, students are required to have:

- An undergraduate or higher degree in a health-related discipline, or
- An undergraduate or higher degree in any discipline and two years full-time equivalent work experience in a health-related discipline.

Applicants seeking admission on the basis of work experience must support their application with a [Statement of Service](#) for all work experience listed on the application.

### Program structure

Qualification of this award requires the successful completion of 80 credit points which include the subjects listed on page 12 and 13.

### Professional recognition

Students will receive a Level 8 Graduate Diploma recognition and entitled to the use of the GDCH postnominal.

### Optional activities

Over the course of study, there may be opportunities to attend additional educational experiences or services to some students which are held in Sydney (or online).

Activities include:

- Live webinars with senior clinicians of SCHN
- Online tutorials
- WSU library access

# Learning outcomes



Transforming kids health globally

The program content is divided into eight subjects which cover foundations and specialised areas of paediatrics.

Upon completion of the program, Students can expect to:

**1**  
Evaluate child health care frameworks, common developmental and behavioural issues and how health inequities impact on the care for children.

**2**  
Assess and examine common paediatric presentations according to current best evidence.

**3**  
Conduct appropriate investigations to assist with reaching a diagnosis aligning with best evidence.

**4**  
Develop evidence-based multi-disciplinary management plans of common paediatric problems.

**5**  
Communicate diagnosis and management of patients and their needs to parents/ carers.

**6**  
Reflect on Australian and international requirements for ethical conduct and professional standards to inform practices in the field of child health.

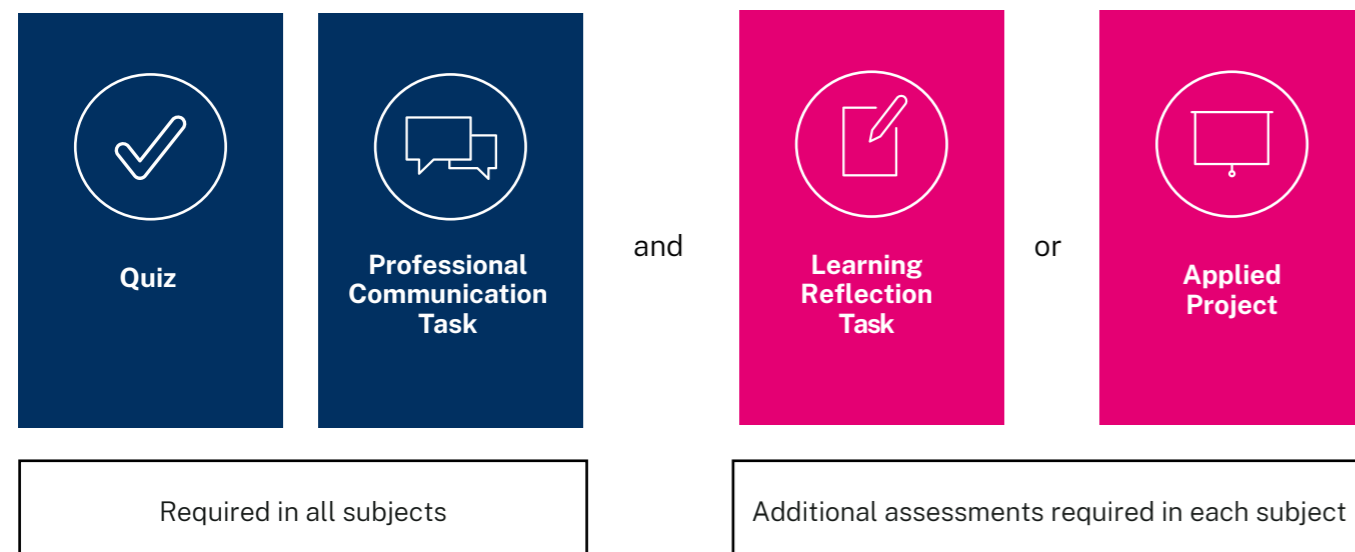
**7**  
Advocate for vulnerable paediatric patients early intervention to improve health outcomes for children and families.





# Assessments

Our assessments are designed to put your learning to the test. Develop a solid foundation in paediatric health as you apply theory and critical reasoning to real world challenges.



## Quiz

The purpose of the quiz questions is for students to demonstrate their application of clinical knowledge in the assessment, ordering investigations and management in each subject.

## Professional Communication Task

The purpose of the Professional Communication Task is for students to demonstrate clinical knowledge regarding common paediatric presentations and the ability to explain the management and preventative strategies to parents and carers.

Students will be presented with a clinical scenario and will be required to record short video responses of them explaining the management of common acute, chronic, and critical presentations to parents and carers which are likely to be encountered in everyday practice.

## Learning Reflection Task

The purpose of the Learning Reflection Task is for students to critically analyse and reflect on their own personal learning to identify key themes of learning throughout during this subject. Students would log key areas of learning, document in relation to their own experiences/clinical practice changes to their behaviours and impacts to improved patient outcomes.

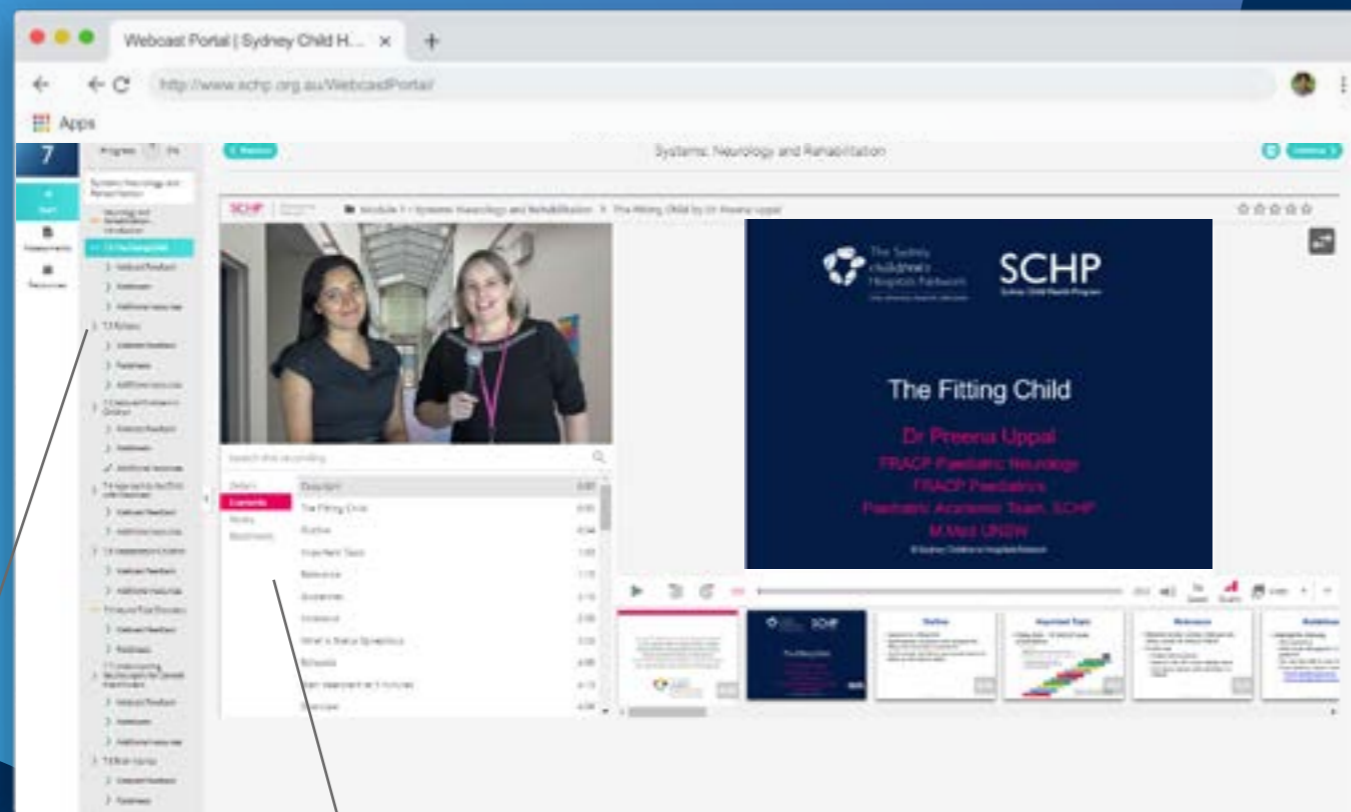
## Applied project

The purpose of the 'Applied Project' is for students to create and present a plan of how they intend to advocate for, and achieve, improved health outcomes for children and adolescents.

Participants are required to submit a project video presentation/recorded PowerPoint presentation/Poster presentation. The presentation will advocate for improved health outcomes of children from a chosen topic.

# Learning environment

SCHN's interactive "SCHP Learning Platform" gives students complete access to webcasts, course material, assessments and more.



**Resources:** Access all relevant resources shared by SCHN and WSU including Learning Guides, Guidelines, Assessment Documents, factsheets and interesting reads.

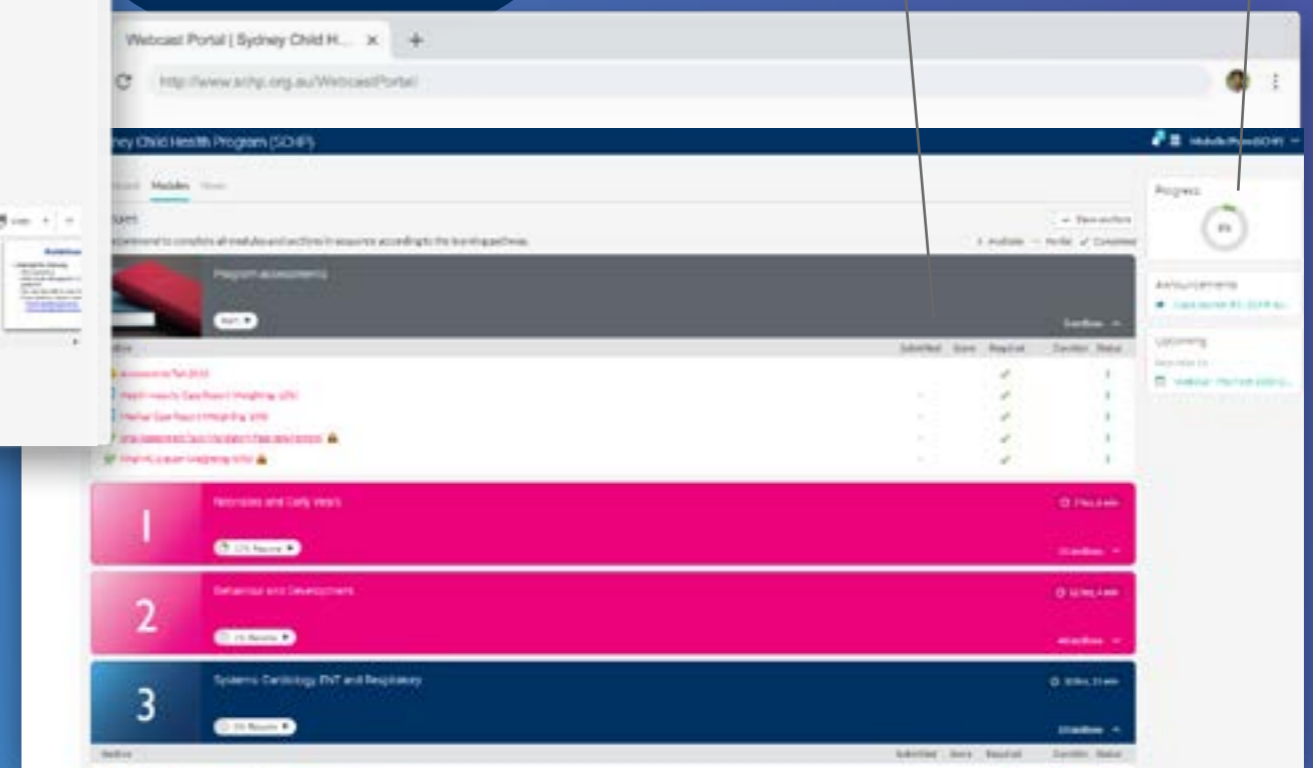
Visit the dashboard to access key information for each subject, including webcast titles, duration, and completion status.

Track your progress, announcements and performance in one place.

Easily access course webcasts and resources and save your viewing progress automatically.

View, search and keep notes on a particular section of the webcast that interests you.

**Assessments:** View all assessment information and grades for your course including quizzes, reports, and exam grades.



# Subjects

1. Newborn and Infant Development	2. Behaviour, Development and Disability
<p>MEDI5001   Credit points: 10</p> <p><b>Subject outline</b></p> <p>This subject introduces students to the foundational concepts and knowledge of newborn and infant development required to understand the specialised area of infant health practice. Students will examine the key issues, concepts and topics that are specific to newborn and infant development.</p> <p>This subject covers the techniques needed to carry out a comprehensive newborn examination, and to be able to assess common acute, chronic, and critical issues in infancy to ensure improved health outcomes. Students will be provided with a practical approach to the management of newborn medical presentations, feeding and sleeping issues, and updates to the Australian Immunisation schedule.</p>	<p>MEDI5002   Credit points: 10</p> <p><b>Subject outline</b></p> <p>This subject provides guidance to students in conducting a thorough paediatric history and examination, including strategies to engage children and communicate effectively with parents.</p> <p>Students will develop skills to assess normal childhood developmental milestones and behaviours and recognise key factors that indicate at-risk and vulnerable populations so they can benefit from timely interventions. This subject specifically addresses common conditions such as ADHD, autism and language delay.</p>

3. Adolescent, Mental Health and Health Inequity	4. Emergency and Acute Care
<p>MEDI5003   Credit points: 10</p> <p><b>Subject outline</b></p> <p>This subject provides students with an informed, structured approach to common acute and chronic adolescent issues, including approaches to mental health (HEADSS), substance use, and sexual health assessments. This subject outlines evidence-based strategies in non-pharmacological and pharmacological management of common mental health conditions in adolescents and young adults. This subject includes insights from clinical experts on improving health outcomes for refugee populations and current global paediatric health initiatives aimed at improving child health outcomes.</p>	<p>MEDI5004   Credit points: 10</p> <p><b>Subject outline</b></p> <p>This subject is designed to provide students with a systematic approach to assess common emergency presentations in children, including unwell infants, febrile children, and children with breathing difficulties. Students are guided by clinical experts in the provision of emergency care and appropriate referral pathways to maximise patient outcomes, minimise complications and avoid unnecessary hospital presentations.</p> <p>Students will learn to communicate effectively with parents enabling them to detect and manage common clinical situations and prevent adverse outcomes. In this subject, students learn to identify children at risk and appropriately intervene and advocate to ensure safety and protection of these children.</p>

5. Cardiorespiratory, ENT and Allergy	6. Gastroenterology and other Specialties
<p>MEDI6001   Credit points: 10</p> <p><b>Subject outline</b></p> <p>This subject provides students with a systematic approach to the assessment of children with common cardiorespiratory, ENT and allergy presentations, a structured approach to management, and practical advice on communicating care plans and health promotion strategies with parents and carers.</p> <p>This subject specifically addresses chest pain, asthma, bronchiolitis, tonsillitis and dermatitis. Students will learn to differentiate between common food allergies and intolerances and arrange appropriate investigations to assist with diagnosis minimising cost and distress to the family. Throughout this subject, students will consider the specific health needs of our First Nations people to maximise health outcomes and close the gap.</p>	<p>MEDI6002   Credit points: 10</p> <p><b>Subject outline</b></p> <p>This subject examines gastroenterological, urological and haematological presentations commonly encountered in paediatric clinical practice. It provides students with a systematic approach to assessment and practical advice on communicating with parents and carers.</p> <p>This subject focuses on common conditions in primary care, including the approach to abdominal pain, nocturnal enuresis and urinary tract infections. Students learn the essential work-up and critical management for these conditions. This subject also addresses the assessment and management of anaemia, bleeding disorders and childhood malignancy. This subject includes health promotion strategies and parental education to ensure parents recognise when there is a need for emergency care.</p>

7. Infectious Disease and Autoimmune Conditions	8. Neurology, Musculoskeletal and Surgical Problems
<p>MEDI6003   Credit points: 10</p> <p><b>Subject outline</b></p> <p>This subject covers a structured approach to the recognition and assessment of acute and critical childhood infections commonly encountered in primary care, from common paediatric skin infections and gastroenteritis to bone and joint infections and meningitis. This subject also addresses antibiotic resistance and teaches best prescribing practices. Given the incidence and impact of paediatric skin infections globally, students will also develop a systematic approach to address health inequities experienced by children both nationally and internationally.</p> <p>This subject also addresses common childhood autoimmune conditions and juvenile arthritis, providing students with a systematic approach to assessment and management of these conditions.</p>	<p>MEDI6004   Credit points: 10</p> <p><b>Subject outline</b></p> <p>This subject introduces the key features of a comprehensive neurological examination. Clinical experts will guide the student on the important clinical features to recognise, assess and manage acute, chronic, and critical neurological disorders.</p> <p>This subject specifically addresses the approach to the child with weakness, headaches in children and concussion. It also addresses common surgical presentations providing students with a pathway of escalation of care. Students will be provided with resources and advice for communicating the management plans of neurological and common surgical conditions with children, parents and carers and provide long-term surveillance and family support.</p>

# How to apply

## 1. Register interest

Register your interest on [scheducation.com.au](http://scheducation.com.au) to receive email instructions on how to apply online.

## 2. Apply online

Upload all your supporting documents to the online application system. You will be given a unique student ID and login to check the progress of your application.

## 3. Application assessment

WSU Admissions Officers will assess your eligibility for admission to the course and issue an offer online if you are eligible.

## 4. Offer of admission

Login to read your offer, the conditions (if any that you must satisfy) and all the important information about studying at the University.

## 5. Accept your offer

Sign the Acceptance Form and return it with your tuition fee payment to the University as instructed in your offer letter. Carefully read the refund terms.

## 6. Register for subjects

Log into MyStudentRecords Portal to register for your subjects. You can register up to 2 subjects per quarter.

## 7. Access to subjects

Receive email instructions on how to activate your account on the SCHN "SCHP" Learning Platform. [learning.schp.org.au](http://learning.schp.org.au)

## 8. Orientation

Attend the virtual orientation to get important information and advice to support your online study.

## 9. Start

Set up a study plan and start learning at a time that suits you.

### Further information

Program enquiries:  
Email: [service@schp.org.au](mailto:service@schp.org.au)  
Phone: 02 9933 8600





## Contact information

(02) 9933 8600  
service@schp.org.au  
schneducation.com.au

Sydney Child Health Program  
Sydney Children's Hospitals Network  
Locked Bag 4001  
Westmead NSW 2145 AUSTRALIA



The Sydney  
children's  
Hospitals Network



WESTERN SYDNEY  
UNIVERSITY